

Thank you for purchasing your blinds from cheapblinds.com.au
Your new blinds have been custom built for you from the highest quality materials right here in Australia.



Both Blinds Front Rolled



Both Blinds Back Rolled



**Rear Blind Back Rolled
Front Blind Front Rolled**

Firstly remove the blinds from the packaging. The installation brackets are supplied in pairs. The installation brackets are always mounted so that the inner surfaces face each other. It is very important that the brackets are mounted so that the blinds are level when installed.

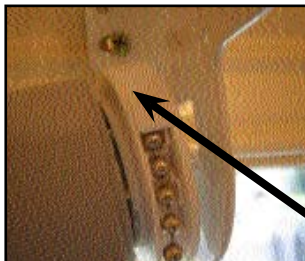


INSIDE MOUNT

Have a look at your blind and see where you ordered the control side to be on. Take the bracket with the protrusion, (the side where the chain drive is on) and look carefully at your window.

Hold the bracket to the spot on your window where it is to be fixed, (depending on the depth of your window) the bracket and blind will either sit flush in your window frame or will protrude past the window frame.

Our bracket dimensions are 120mm by 120mm.



With a pencil, please mark the two screw holes on each bracket.

Drill a small hole in the middle of each marking to help the screws in.

Fix the brackets to the window with screws provided.

Grab the rear blind and install the chain drive end into the rear protrusion of the bracket.

VERY IMPORTANT

PLEASE ENSURE THE BLIND IS INSTALLED INTO THE BRACKET WITH THE TWO MARKINGS ON TOP OF THE CHAIN DRIVE FACING UPWARD.



Hold the blind in position.

Now we need to place the other end of the blind into the track of the other bracket until it clicks into position.

When the rear blind is fully installed we can start with the front blind.

Once again we repeat the process.

Grab the second blind and install the chain drive end into the bracket with the protrusion.

Hold the blind into position, now we need to place the other end of the blind into the track of the other bracket until it clicks into position.

Your double blinds are now installed. To open or close the blinds they can now be operated by the chain.



OUTSIDE MOUNT

SAME AS ABOVE, EXCEPT PLACE BRACKETS ON EITHER END OF WINDOW. TOP CORNER ARCHITRAVES.

HOW DO YOU REMOVE BLINDS

It is very simple to remove your blinds, grab the end of your blind which does not have the chain operation, turn the large wheel anti clockwise. By doing this will allow the metal pin to move inward into the blind and the blind will simply slide out of the bracket. Please ensure you have a firm grip on the blind so it doesn't fall down in the process.

NEW TIMBER BLINDS INSTRUCTIONS:

Your blinds come with two end brackets.

- One is marked with LH which means this is your left hand bracket.
- The other is marked with RH. This is your right hand bracket.
- The bracket has a latch which needs to be opened upwards.

The following steps must to be taken to ensure a successful installation:

- Attach the end brackets flush against the sides of the window architrave if outside mount, or
- Against the sides of the window casement, if inside mount.
- Place brackets in position at the end of blind where it is to be installed.
- Mark the drill holes with a pencil.
- For inside mount mark the top holes in the bracket. Then pre-drill the holes where the screws will go into the architrave of the window.
- For outside mount mark the holes in the middle of the bracket. Then pre-drill the holes where the screws will go into the architrave of the window.

Intermediate bracket

If your blind is large, you will require intermediate brackets.

As part of cheapblinds.com.au service, we have supplied an intermediate bracket to ensure stability of your large blind.

- Screw the intermediate bracket, approximately in the middle of the blind into your window architrave (outside mounting) or (if inside mounting) in the window casement, to stop it from sagging and to support the blind.

When you have installed both brackets onto architrave (if outside mounting) or into window frame if inside mounting, then you are ready to install the blind.

- Holding the blind from the underneath place the headbox of blind into the brackets.
- To secure the blind you need to close the bracket latch, and ensure it is closed and locked into position before you pull the cords to release the blind.
- When both brackets have been securely locked into position it is safe to lower the blind.

SAFETY CLEAT INSTALLATION

Screw cleat at minimum height of 1600mm from the floor. Be sure to fix each cleat with 2 screws. Wrap Excess cord around cleat.

To install the valance

- Pass clips through the inside of the valance.
- Place clips on either side of valance and evenly throughout.
- Then hang the valance on the top of the headbox so it can hide the headbox.
- Push in the clips so it is securely on the blind.

Cleaning of the blind

Dust regularly with a soft cloth.